



Thank you for expressing your interest in Duke Golf Tours 2025!

Following, you will find detailed information about our tours, along with terms and conditions, a registration form, and answers to frequently asked questions. Please take a moment to review this information, complete the registration form, and email it back to us to secure your spot on our tours.



What's included

THREE ICONIC GOLF COURSES & CART HIRE

Waitangi Golf Club

Play alongside coastal cliffs with panoramic ocean views.

Kauri Cliffs

A bucket-list course offering a challenge for all skill levels, with spectacular scenery.

Bay of Islands Golf Club

A peaceful course set amidst lush, native New Zealand forest.

ACCOMMODATION

Four nights of luxury at the *Duke of Marlborough Hotel* in a superior room – twin share or single.

TRANSPORT

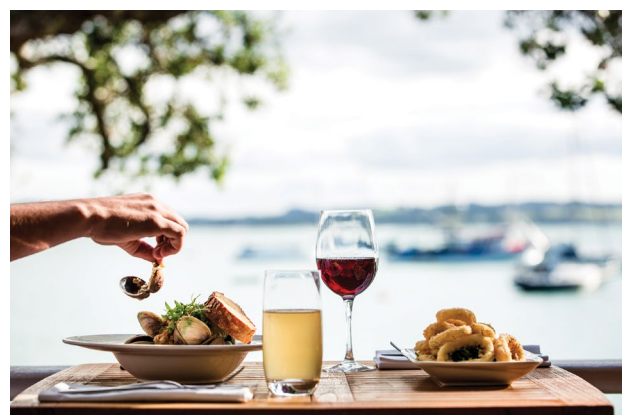
To and from courses ex Duke.

DELICIOUS DINING EXPERIENCES

Two meals at the *Duke of Marlborough Hotel*

One meal at *Charlotte's Kitchen*, Paihia including ferry transfers

One meal at a *local Russell restaurant* - as chosen by Duke team



Breakfast every morning at the *Duke restaurant*

Packed lunches for your golf days



Tour Dates:

Arrival Sunday 6th April 2025
Departure Thursday 10th April 2025

Arrival Sunday 11th May 2025
Departure Thursday 15th May 2025

Tour will have minimum 4 players, maximum 12 players.
Non playing partner's welcome

PRICES

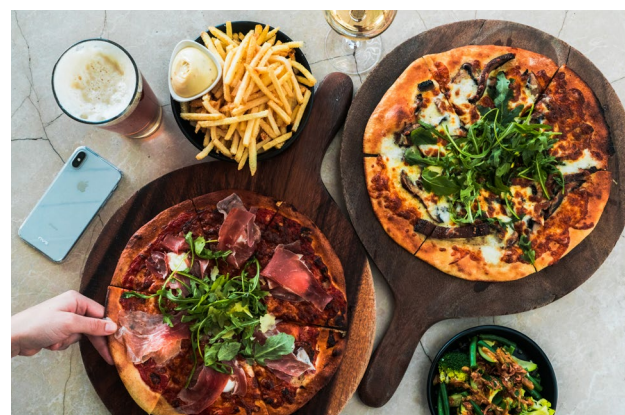
Arrival Sunday 6th April 2025
Departure Thursday 10th April 2025

Twin share in Superior room **\$2100** per person
Single occupancy in superior room **\$2600** per person

Arrival Sunday 11th May 2025
Departure Thursday 15th May 2025

Twin share in Superior room **\$1950** per person
Single occupancy in superior room **\$2400** per person

I would like to bring my Non player partner please provide me with more information and pricing





Terms and Conditions

PAYMENTS

Pricing Includes 4 nights' accommodation in a superior room, welcome drink and pack, all meals, cart and green fees, transport to golf courses ex Duke.

Does not include golf clubs and balls etc, beverages, additional snacks or arrival and departure transfers.

50% deposit required to confirm registration with remaining balance paid 45 days prior to tour date. Payments only refundable until 45 days prior to arrival date.

Non NZ residents will have an extra fee as per Green fees at *Kauri Cliff*. Please note proof of residency may be required.

Australians: \$106 additional / International: \$240 additional

CANCELLATIONS

If minimum numbers are not met (*4 players*) the tour will be cancelled one month in advance of selected tour date and full refund will be given.

We will only cancel the day if the golf course deems the course closed. We may be able to alter the start times to help avoid weather issues. In the event of a course closure a portion of green fees and cart hire will be refunded.

The Duke retains the right to change restaurants or courses in the event of unforeseen circumstances. A suitable alternative will be provided.





Registration

Full Name:

Phone Number:

Tour Date: *(select one)*

Arrival **Sunday 6th April 2025** - Departure **Thursday 10th April 2025**

Arrival **Sunday 11th May 2025** - Departure **Thursday 15th May 2025**

Club Index number:

Twin Share *(select)*

Yes *(name of person twin sharing)*

No

Dietary Requirements / Allergies:

.....

.....

Emergency Contact Name:

Emergency Contact Number:

T-shirt size:

Each player needs to complete a registration form.

I have read and understood the terms and conditions of Duke Golf Tour 2025

Signed and Dated

Following receipt of your registration form you will be emailed an invoice for your deposit.

PLEASE RETURN YOUR COMPLETED FORM TO golf@theduke.co.nz

Frequently Asked Questions

Can I hire a golf cart, clubs etc?

We have organised the golf carts but if you would like to hire clubs please let us know and we can organise this for you.

Can I upgrade my room?

Yes - this will be subject to availability and have additional cost

How many people are on the tour?

Maximum of 12 - minimum of 4

Is there a dress code for the courses?

Smart casual with appropriate footwear.

Kauri Cliffs requires **Men** - shirts with collars and sleeves, slacks or Bermuda length shorts.

Women - dresses, skirts, mid length shorts and shirts with collars or sleeves



What is our itinerary?

SUNDAY:		ARRIVAL	Dine	Duke of Marlborough Hotel
MONDAY:	Play	Bay of Islands	Dine	Charlotte's Kitchen
TUESDAY:	Play	Waitangi	Dine	Local Russell Restaurant
WEDNESDAY:	Play	Kauri Cliffs	Dine	Duke of Marlborough Hotel
THURSDAY:		DEPARTURE		

Subject to change. A week out from your arrival we will provide you with a detailed itinerary & timings

What time will tee off be?

We will aim for the first tee off time to be between 9.00am and 10.00am (*depending on the course*) and you will tee off in a group of 4. We will make up the groups by friends first and then similar handicaps to help with the pace of play.

What sort of transport are we in and how long does it take to get to the golf course?

We have a local transport company who are partnering with us on these tours -

Russell Mini tours - who have comfortable air-conditioned mini vans to take you to each of the courses.

Approx drive times: *Waitangi* - 40 mins / *Bay of Islands* - 1 hour / *Kauri Cliffs* - 1.5 hours

Can we do other activities while we are here?

You may have some free time in the afternoon following your round and we are happy to organise any additional activities we can fit in for you. These will come at an additional cost.

Can I get picked up from the Bay of islands airport?

Yes we can organise this for you at an additional cost.